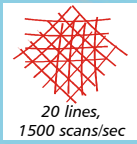


## Presentation Scanner



Hand-Held Readers

## General Description

Datalogic, the European leader for hand-held reader sales, offers the market a new omni-directional reader. The Catcher™ guarantees outstanding reading performance in distribution and retail applications thanks to its state-of-the-art optics and electronics. The omni-directional reading pattern of 20 lines and 1,500 scans per second assure the highest "First Pass" decoding rate, an important feature in applications that require immediate and intuitive reading.

The Catcher's™ architecture offers unique functions to the market. The advanced technology used for decoding increases the reading performance by making it easy to read damaged or poorly printed codes. The Data Editing and Data Formatting modes allow the code to be completely formatted before the information is sent to the host. In addition, thanks to the flash memory, the reader can be updated on the field, providing it with new functions and allowing it to read new symbologies.

Two models of the Catcher™ are available: the Catcher™ D531 multi-interface (USB, RS232 and Wedge) and the Catcher™ D511 that combines the standard serial interface with complete connectivity to IBM46xx cash registers. Both models are provided with the "Single Line" option: by simply pressing the button on the reader, the omni-directional pattern becomes a single line, which is very useful for manual reading of codes close to each other. The readers can also be configured in "stand-by" mode to minimize consumption when the scanner is not in use: the scanner will automatically "wake-up" when it detects a code. Confirmation of the code read is provided by a beeper that can be heard in loud environments and a bright led that can be seen even in well-lit environments.

The Catcher™ is the ideal solution for "check-out" counter applications in Retail markets and "front-desk" applications in Office automation markets such as manual reading of documents, envelopes and small packages in post offices and couriers.

## Features

- > High reading performance: 20 scan lines and 1500 scans/sec.
- > Reduced dimensions
- > Interfaces: USB, RS232 and Wedge in a single model
- > Firmware update
- > "Single Line" option
- > EAS connectivity

## Applications

- > Distribution and Retail
  - POS/Check-out
  - Convenience stores
  - Cash & Carry
  - Gas stations
  - Book stores
  - Pharmacies
- > Office Automation
  - Document handling/Front desk
  - Post offices
  - Couriers
  - Public offices

## Specifications

### ELECTRICAL CHARACTERISTICS

POWER SUPPLY	5 V
ELECTRIC CURRENT	< 350 mA

### MECHANICAL CHARACTERISTICS

DIMENSIONS (max.)	85 (L) x 87 (P) x 150 (H) mm
WEIGHT (max.)	340 g (without cable)

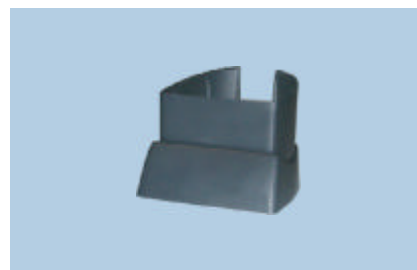
### PERFORMANCE

LIGHT SOURCE	Laser diode at 650 nm
READING DISTANCE	Up to 28 cm (depends on code resolution)
INTERFACES	RS232, Wedge, USB, IBM46xx
SOFTWARE	Can be updated and programmed
SCANNING SPEED	1500 scans/sec
DECODING	Interleaved 2/5, Code 39 Code 128, EAN/UPC, EAN128, Code 93, Code 11, RSS

### ENVIRONMENT

OPERATING TEMPERATURE	0° to 40° C
STORAGE TEMPERATURE	- 40° to 70° C
AMBIENT LIGHT IMMUNITY	10,000 lux
HUMIDITY (non condensing)	0 to 95%
SHOCK RESISTANCE	120 cm

## Accessories



Desk stand



Wall support

### Desk stand

The heavy weight base of the desk stand provides the reader with maximum user flexibility. The reading angle and height can be adjusted by using special modules.

### Wall support

The wall support provides flexible installation in applications that require the reader to be mounted on a wall.

Switzerland • OPAL Associates AG • Motorenstrasse 116 • CH-8620 Wetzikon • Telefon +41 (0)1 931 12 22 • Telefax +41 (0)1 931 12 20 • Email [info@opal-holding.com](mailto:info@opal-holding.com) • URL <http://www.opal.ch/> • OPAL Associates SA • Avenue des Boveresses 54 • Case postale 29 • CH 1000 Lausanne 21 • Telefon +41 (0)21 653 95 00 • Telefax +41 (0)21 653 95 02 • Email [info@opal-holding.com](mailto:info@opal-holding.com) • URL <http://www.opalsa.ch/> • Germany • OPAL Associates GmbH • Lohnerhofstrasse 2 • D-78467 Konstanz • Telefon +49 (0)7531 813 000 • Telefax +49 (0)7531 813 00 99 • Email [info@opal-holding.com](mailto:info@opal-holding.com) • URL <http://www.opalgmbh.de/> • OPAL Associates GmbH • Osterholder Allee 2 • 25421 Pinneberg • Telefon +49 (0)4101 787 615 • Telefax +49(0)4101 787 616 • Email [info@opal-holding.com](mailto:info@opal-holding.com) • OPAL Associates GmbH • München • Telefon +49 (0)89 12737 556 • Telefax +49 (0)89 12737 557 • Email [info@opal-holding.com](mailto:info@opal-holding.com) • OPAL Associates GmbH • Frankfurt • Telefon +49 (0)69 8236 6501 • Telefax +49 (0)69 8236 7709 • Email [info@opal-holding.com](mailto:info@opal-holding.com) • OPAL Solutions GmbH • Wilhelmstr. 22 • 52428 Jülich • Telefon +49 (0)2461 936 770 • Telefax +49(0)2461 936 771 • Email [info@opal-holding.com](mailto:info@opal-holding.com) • URL <http://www.opal-solutions.de/> • Austria • OPAL Associates GesmbH • Vorarlberger Wirtschaftspark • A-6840 Götzis • Telefon +43 (0) 5523 58833 • Telefax +43 (0)5523 521569 • Email [info@opal-holding.com](mailto:info@opal-holding.com) • URL <http://www.opalgmbh.at/> • OPAL Associates GesmbH • Donauefelderstr. 101/2/8 • 1210 Wien • Telefon +43 (0)1 270 03 13 • Telefax +43(0)1 270 03 15 • Email [info@opalgmbh.at](mailto:info@opalgmbh.at)

